

# CFW300

EASY DRIVE



**SIMPLIFY**  
YOUR JOB,  
MAKE IT **EASY**



# Applications



## Machines and Equipment

Packaging machines, ice-cream machines, mixers, kneading machines, conveyor belts, wood processing, car wash



## Opening/Closing of Gates

Automatic condo or home garage gates, elevator doors, industry or condo vehicle barriers



## Single-Phase Power Supply

100-127 V or 200-240 V single phase power supply to feed a 230 V three-phase induction motor



## Industry

Fans, exhausters, centrifugal pumps, granulators, conveyor belts, palletizers, stirrers, mixers, process dosing pumps



## Stores or Homes

Swimming pool or bathtub pumps



# Flexibility

## Flash Memory Module (CFW300-MMF Accessory)

Download the original parameter settings to others CFW300 with no need to be powered up



## 2 Slots for Function Expansion with Accessories

Slots for communication module

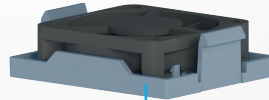
Slots for input and output (I/O) expansion modules



## Remote Operating Interface (HMI) (CFW300-KHMIR Accessory)



## Easily Removable Fan

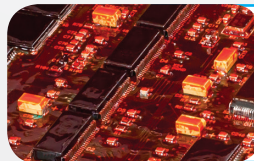


## RFI Filter (CFW300-KFA / B Accessory)

Category C2/C3 can be achieved for electromagnetic interference

## Greater Protection for Aggressive Environments

Boards conformally coated meet 3C2 standard according to IEC 60721-3-3. This ensures greater protection on harsh environment conditions



# Variable Speed Drive

Enhance the experience of using a VSD and make your job easier with the new CFW300, a single-phase and three-phase variable speed drive suitable for induction **motors from 0.18 kW to 4 kW (0.25 to 5 HP)**.

## CFW300 Ratings

Reference	Power supply (V)		Frame size	Rated output current (A)	Maximum applicable motor <sup>1)</sup>		
					Power supply (V)	Power rating	
						(HP)	(kW)
CFW300A01P6S1NB20	Single-phase	110-127	A	1.60	220	0.25	0.18
CFW300A02P6S1NB20				2.60		0.50	0.37
CFW300A04P2S1NB20				4.20		1.00	0.75
CFW300A06POS1NB20				6.00		1.50	1.32
CFW300A01P6S2NB20	Single-phase	200-240	A	1.60	220	0.25	0.18
CFW300A02P6S2NB20				2.60		0.50	0.37
CFW300A04P2S2NB20				4.20		1.00	0.75
CFW300A06POS2NB20				6.00		1.50	1.32
CFW300A07P3S2NB20				7.30		2.00	1.50
CFW300B10P0B2DB20			B	10.00		3.00	2.20
CFW300A01P6T2NB20	Three-phase	200-240	A	1.60	220	0.25	0.18
CFW300A02P6T2NB20				2.60		0.50	0.37
CFW300A04P2T2NB20				4.20		1.00	0.75
CFW300A06P0T2NB20				6.00		1.50	1.32
CFW300A07P3T2NB20				7.30		2.00	1.50
CFW300B10P0B2DB20			B	10.00		3.00	2.20
CFW300B15P2T2DB20				15.2		5.00	3.70

Note: 1) The power values for the maximum applicable motor shown in the table above are reference values and valid for WEG three-phase, four-pole induction motors with power supply of 220 V. The proper sizing of the CFW300 must be determined as a function of the rated current of the used motor.

## Configuration of the Plug-In Modules<sup>1)</sup>

Reference	Slots <sup>2)</sup>	Inputs		Outputs		USB <sup>3)</sup>	Bluetooth	Infrared sensor and NTC <sup>4)</sup>	Encoder <sup>6)</sup>	Fieldbus communication			
		AI	DI	AO	DO					RS485	RS232	CANopen/DeviceNet	Profibus-DP
CFW300-CRS485	2	-	-	-	-	-	-	-	-	1	-	-	-
CFW300-CRS232		-	-	-	-	-	-	-	-	-	1	-	-
CFW300-CCAN		-	-	-	-	-	-	-	-	-	-	1	-
CFW300-CPDP		-	-	-	-	-	-	-	-	-	-	-	1
CFW300-CUSB		-	-	-	-	1	-	-	-	-	-	-	-
CFW300-CBLT		-	-	-	-	-	1	-	-	-	-	-	-
CFW300-IOAR	1	1	-	1	3	-	-	-	-	-	-	-	-
CFW300-IODR <sup>6)</sup>		-	4	-	3	-	-	-	-	-	-	-	-
CFW300-IOAENC		1	-	2	-	-	-	-	1	-	-	-	-
CFW300-IOADR		1	-	-	3	-	-	1	-	-	-	-	-

- Notes: 1) The standard version of the CFW300 already features 4 PNP or NPN digital inputs (configurable), 1 analog input 0-10 V dc / 4-20 mA and 1 relay output 0.5 A / 250 V ac.  
 2) Allows 1 plug-in module on the upper slot (network communication or accessibility) and 1 plug-in module on the lower slot (input/output expansion).  
 3) USB cable included.  
 4) Remote control and battery included.  
 5) Incremental encoder (A/A - B/B), power supply of +5 V @ 100 mA for the encoder, maximum frequency of 400 kHz.  
 6) Configurable isolated digital inputs (NPN or PNP).



**Industrial Motors and Gears Limited**

Tel. 01642 467999

Mob. 07815 889460

Fax. 01642 467988

Email. [sales@imag-uk.com](mailto:sales@imag-uk.com)

[www.imag-uk.com](http://www.imag-uk.com)

Cod: 50077175 | Rev: 01 | Date (m/y): 04/2018

The values shown are subject to change without prior notice.